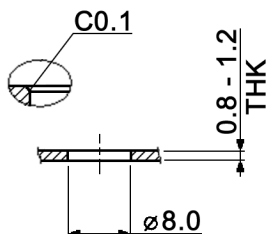
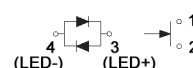
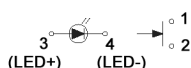


PANEL MOUNTING



Single LED

Dual colours LED



Lens appearance	Colour	Electro-optical data (at 20mA)				Peak wavelength	Viewing angle
		Vf (V)		Iv (mcd)			
		Typ.	max.	min.	Typ.		
Water clear	white	3.3	4.0	900	1500	X/Y=0.31	45°
	red	1.95	2.5	700	1300	630	45°
	yellow	2.1	2.5	12	25	588	45°
	green	2.1	2.5	100	300	570	45°
	blue	3.3	4.0	700	1300	470	45°
	blue (green)	B	3.3	4.0	80	160	470
	G	2.1	2.5	80	80	570	

X=LED colour	
W	white
R	red
Y	yellow
G	green
B	blue
BG	blue / green

Specifications:

Contact rating: 0.1A, 30V DC
 Contact resistance: 50mOhm max. at 100mA, 1.5V DC
 Insulation resistance: 100MOhm min. at 500V DC
 Dielectric strength: 500V AC for 1 minute
 Operating temperature: -40°C to +85°C
 Mechanical life: 50 000 cycles
 Operating force: 250 +/-100gf
 Total travel: 1.2 +/-0.3mm
 Switching function: off - mom
 Material: Cap: PC
 Case / housing: nylon 6/6
 Terminals: copper alloy, gold plated



Tolerances:	Date	Name	DPL 1 CB x
	01/12	dr	
			knitter-switch
			30 25 27
			Page
			1/1
Modifications	Date	Name	